

# SkyView

## KPI Mapper

**From SkyView Software Development, LLC**  
A subsidiary of 4GUnwired, Inc.

*For use with*



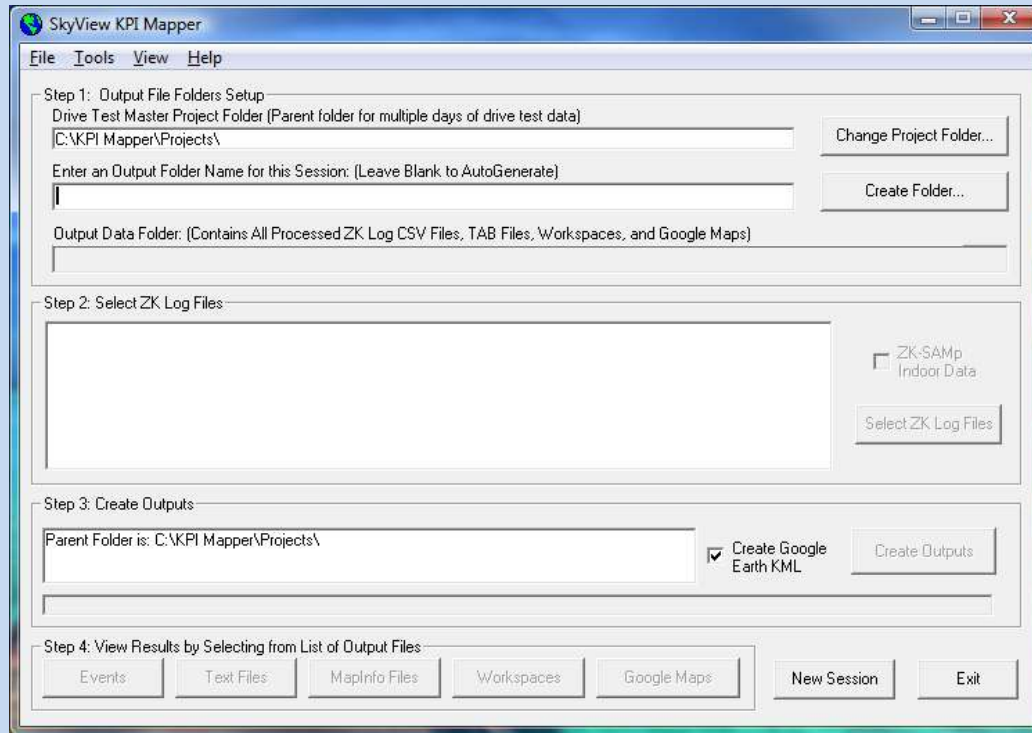
# Description

*SkyView KPI Mapper* is a fast and affordable software tool that enables RF Engineers and Technicians to quickly post process, map and display ZK drive test data and Key Performance Indicators

# Program Features

- Easily unzip ZK Celltest log files for **any technology**
- Quickly display and map ZK drive test data and system KPIs to MapInfo or Google Earth
- Easily performs In Building mapping
- Ideal for network Benchmark tests and Optimization

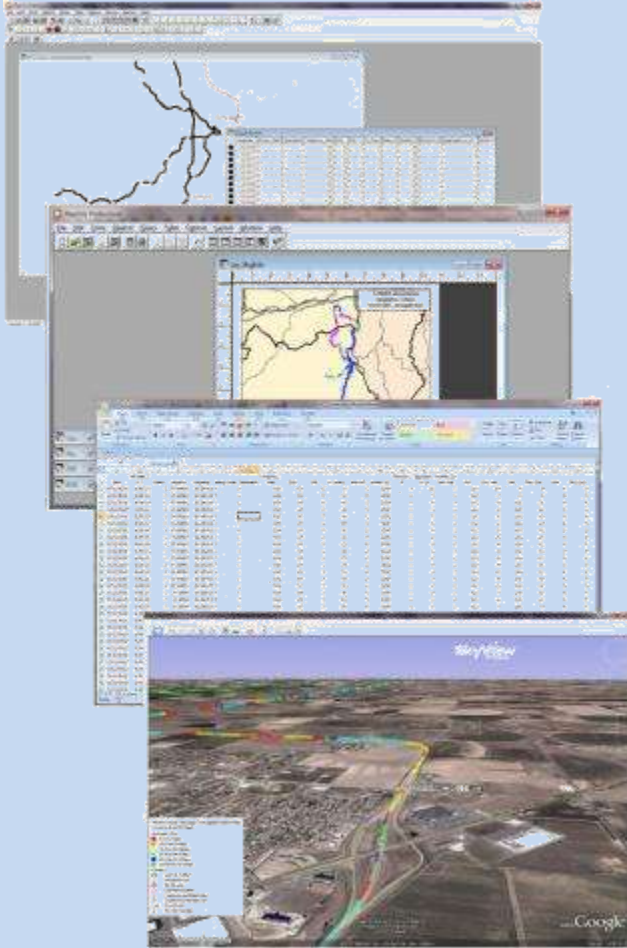
# Simple User Interface



- Immediate Productivity with Step-by-Step Operation
- All Outputs Can be Launched and Viewed upon Completion of Post-Processing...

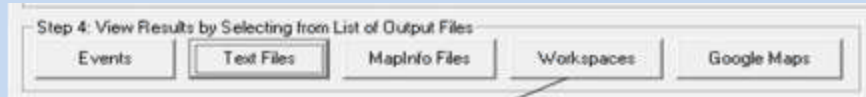
# Available Results

## Processed Data Files and Mapped Outputs

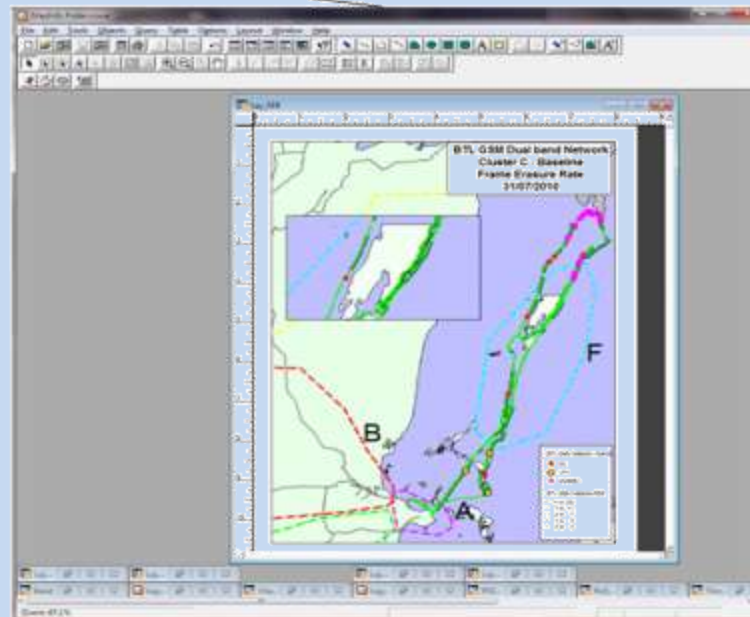


- MapInfo Tables and Workspaces
- Data files Compatible with Excel or Access
- Google Earth KMZ files for Viewing with 3D Terrain and Morphology

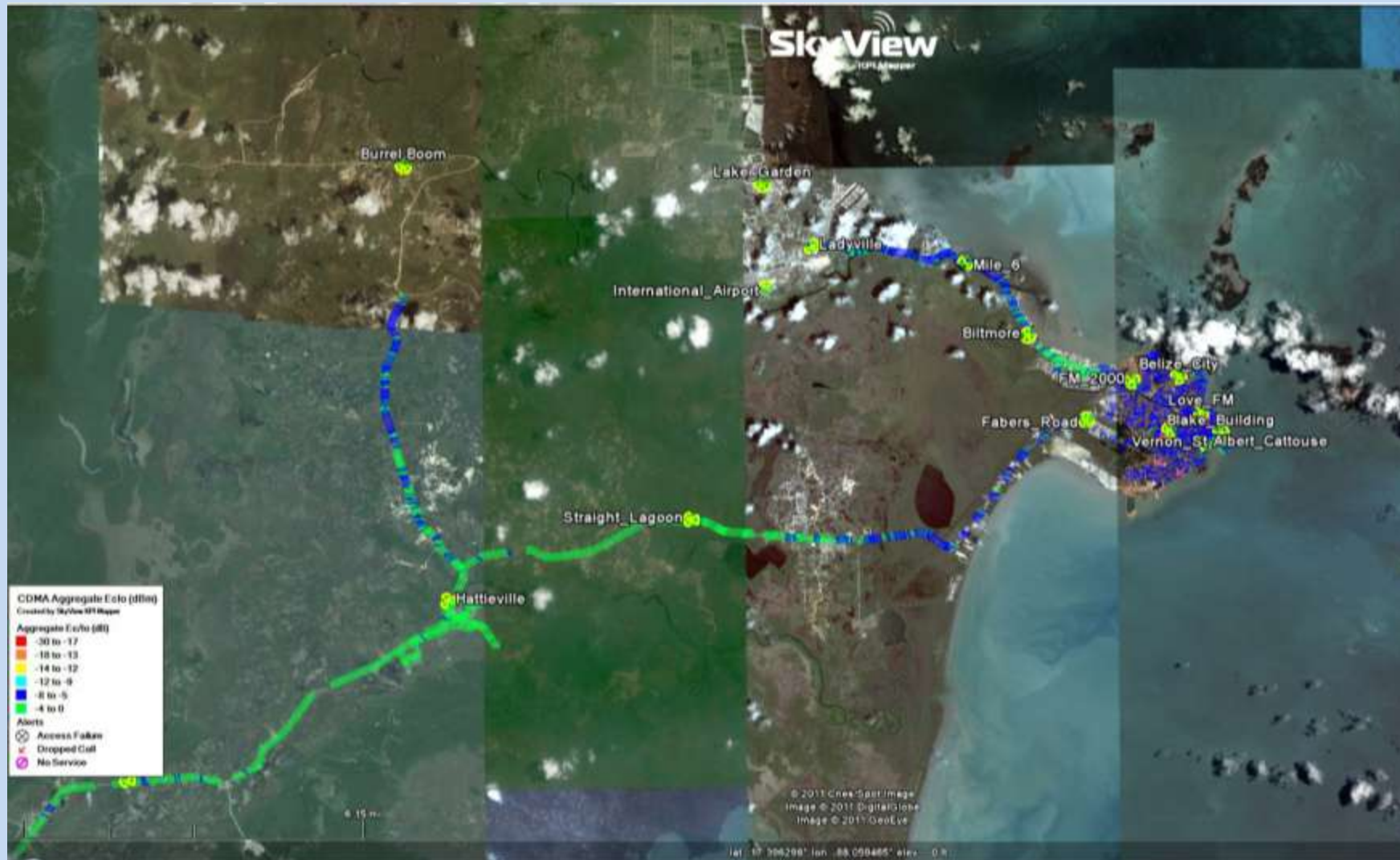
# Browsing Results



Outputs are Opened in the Appropriate Application...



# All KPIs Mapped in Google Earth



# Test Data in Google Earth



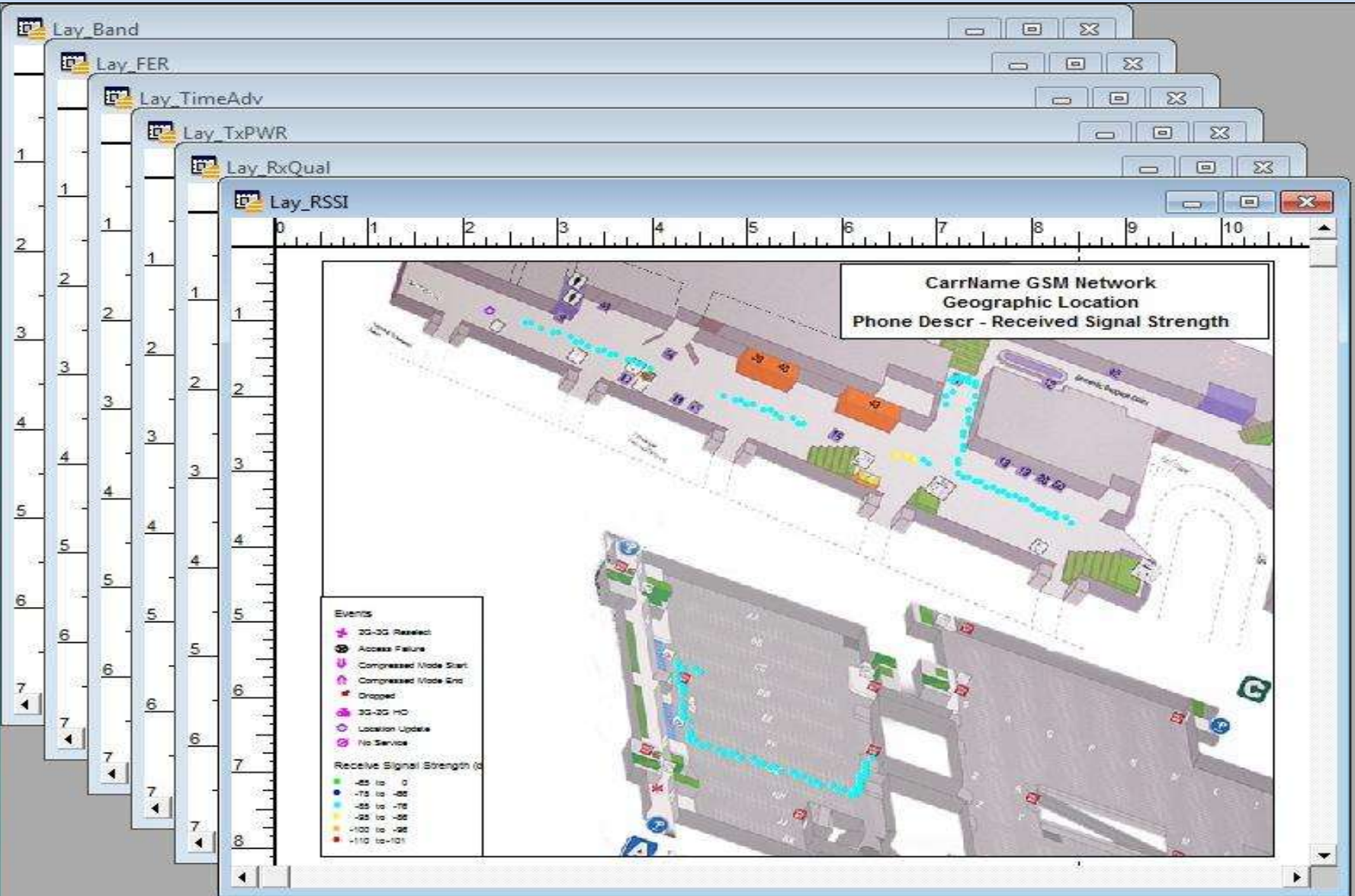
# View Sites and Data in 3-D



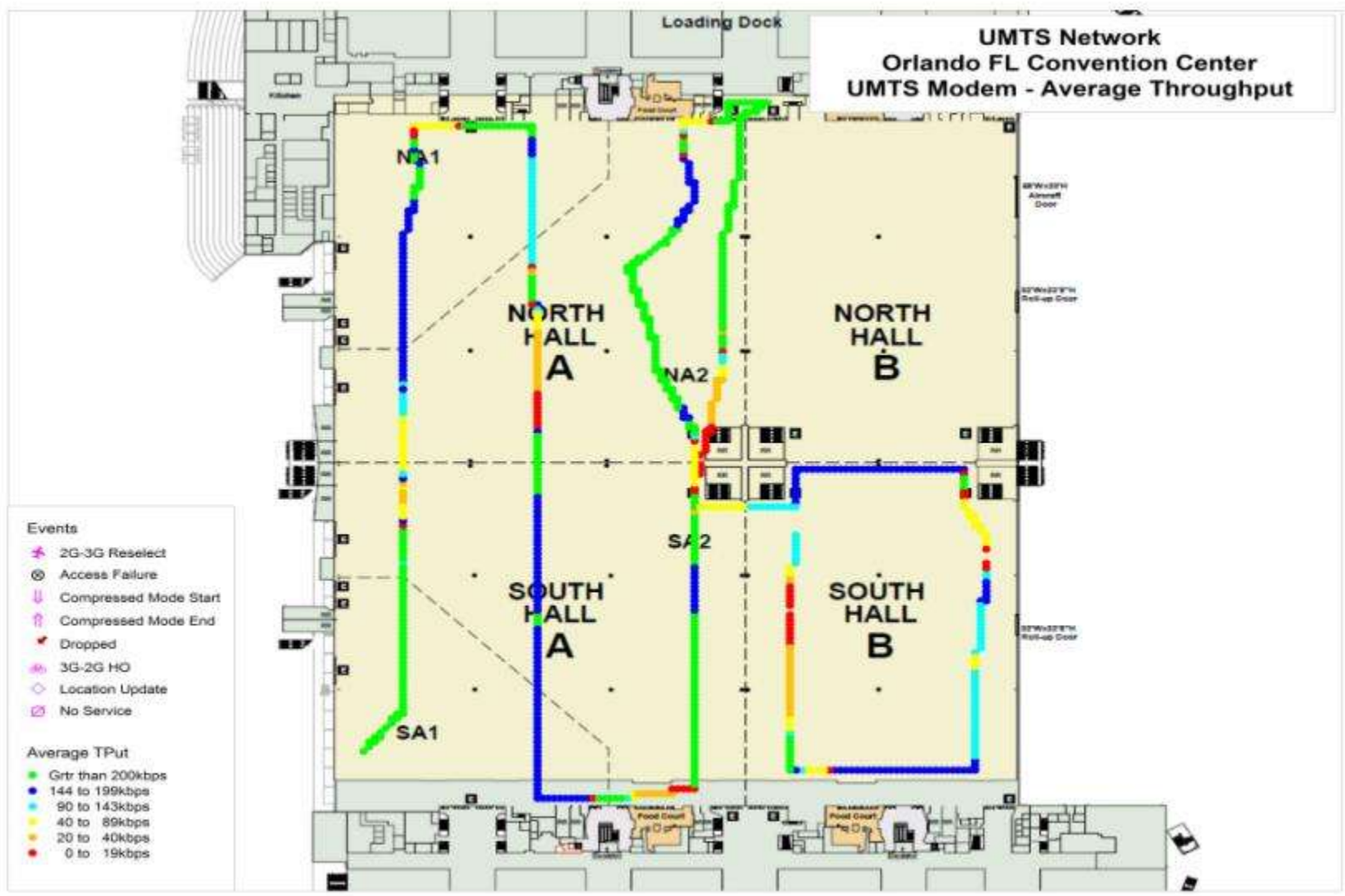
## 3-D Mapping Adds Another Dimension to Troubleshooting...

Users can pinpoint the location of problem areas – view the local terrain, morphology and obstructions...

# In-Building Test



# In-Building KPIs



# Feature Summary

- Low cost **affordable** tool that allows test driver to check data in the vehicle – no need for more expensive post-processing software
- **Simple**, one touch operation instantly maps KPIs to MapInfo Workspaces or Google Earth
- Workers can easily **transmit KPIs across the internet** to clients, colleagues or supervisor
- Works for all technologies – including **LTE** – no additional licensing costs

# Contact Us



SkyView sales and Information:

[Sales@SkyView3DSoftware.com](mailto:Sales@SkyView3DSoftware.com)

or

**Call Us Toll Free at (877) 215-8494**